

# Installing the FileMaker Client (FM 19)

Last Modified on 08/06/2020 1:15 pm EDT

This guide first gives steps for installing FileMaker 19 on a Mac computer, then gives steps for installing on a Windows computer.

## Overview

aACE is built using [Claris FileMaker Pro](#). This allows developers to leverage the FileMaker platform to customize aACE as necessary, providing a perfect fit at a lower cost and higher quality than expensive alternatives. To use aACE, you must first install FileMaker.

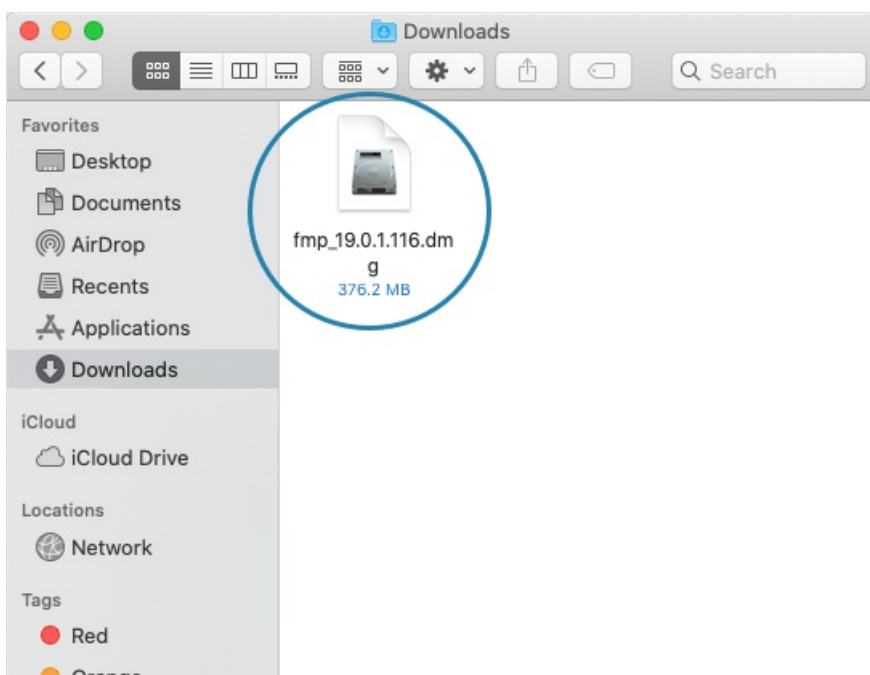
For successfully working with this guide:

- Have at least the minimum [FM19 certified operating system](#) installed on your computer.
- Have administrator privileges on your computer.  
Note: You may also need to adjust preferences on your Mac to [install apps that aren't from the Mac App Store](#).
- Obtain these resources from your system administrator, noting the location on your computer where they get placed:
  - A FileMaker (FM) installer (i.e. a .dmg file for Mac, an .exe file for PC)
  - A license certificate (i.e. an .fmcert file) – For the easiest installation, place the license certificate in your computer's default Downloads folder. This enables FileMaker to automatically populate your license key.

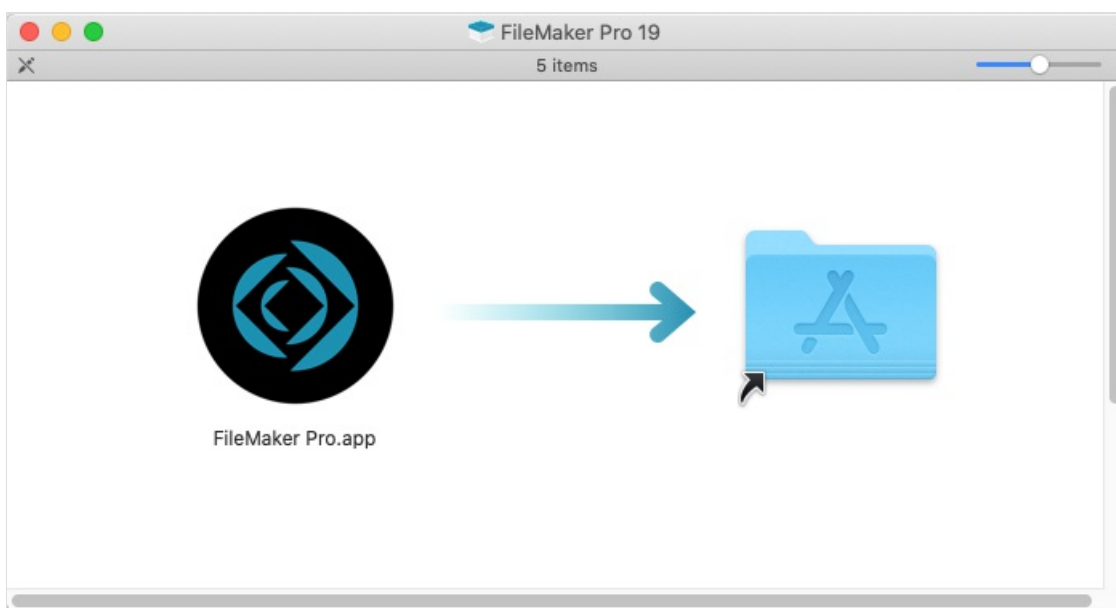
## Mac Installation Process

During the installation process, it can be helpful to minimize other applications so each step of the process is clearly visible.

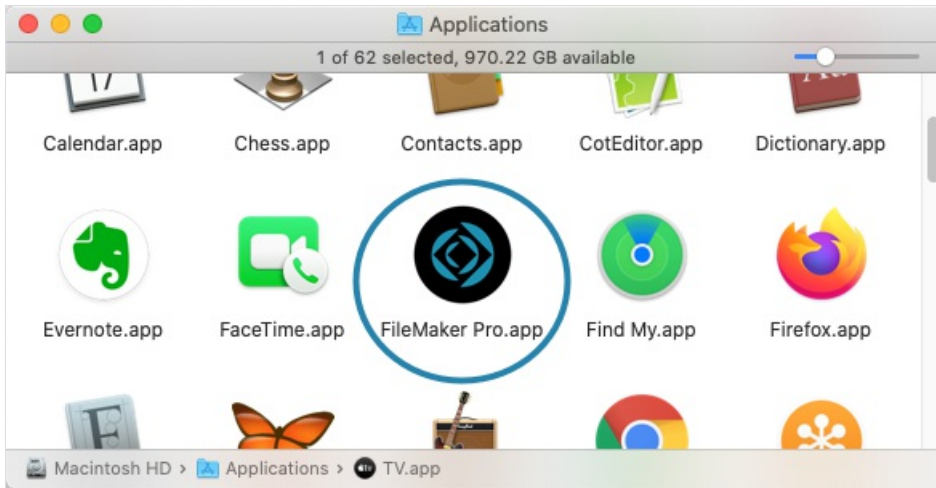
1. Locate and double-click your **FileMaker Installer** (.dmg file).



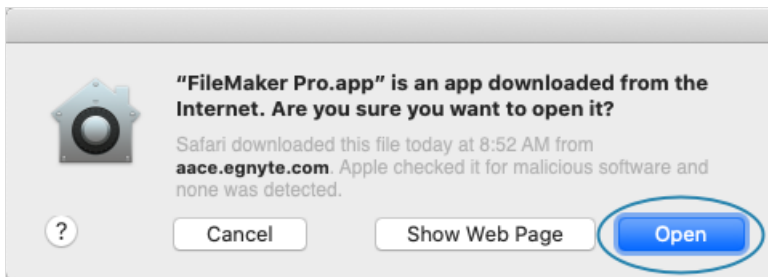
2. When the installation package opens, click and drag the app to the **Applications** folder.



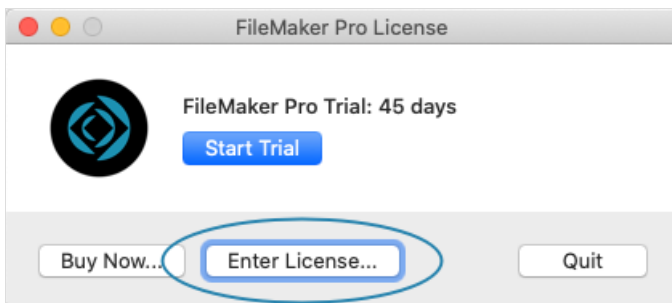
3. After the application is copied, open your Applications folder and double-click the app.



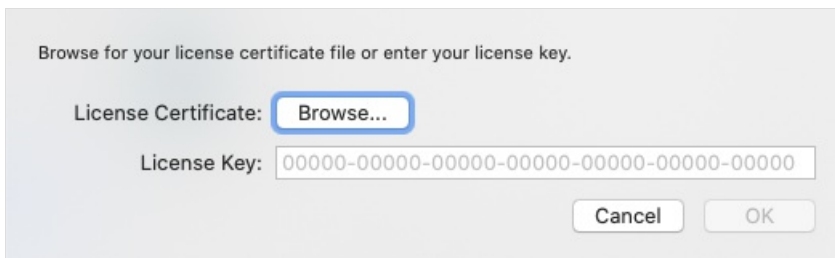
4. If a dialog displays a warning about files downloaded from the Internet, click **Open**.



5. If your license certificate is not in the default Downloads folder, at the FileMaker Pro License dialog, click **Enter License**.



6. At the dialog to locate the license certificate file, click **Browse**.



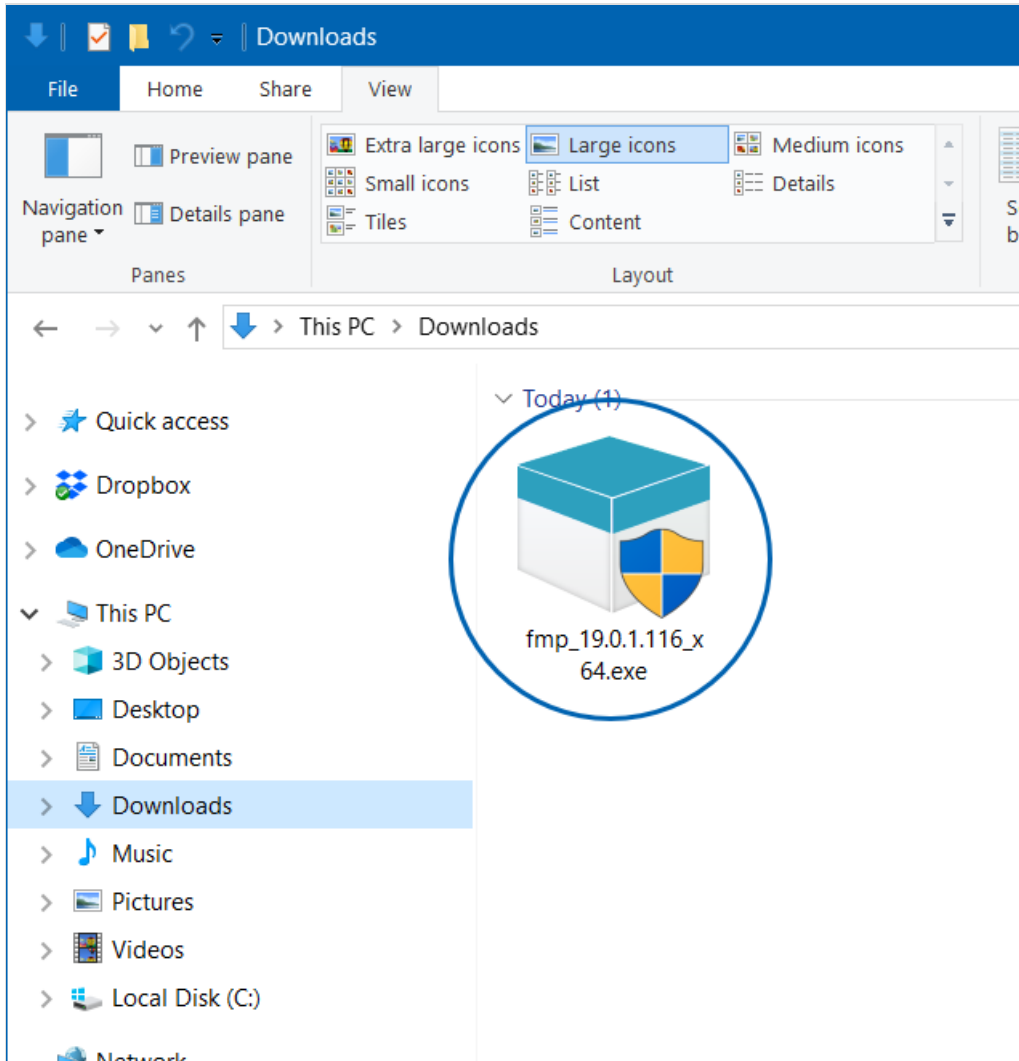
7. Locate the license certificate (.fmcert) file and click **Open**.

The FileMaker launch window displays and you are ready to [login to aACE](#). To streamline access, you can also [obtain a launcher](#).

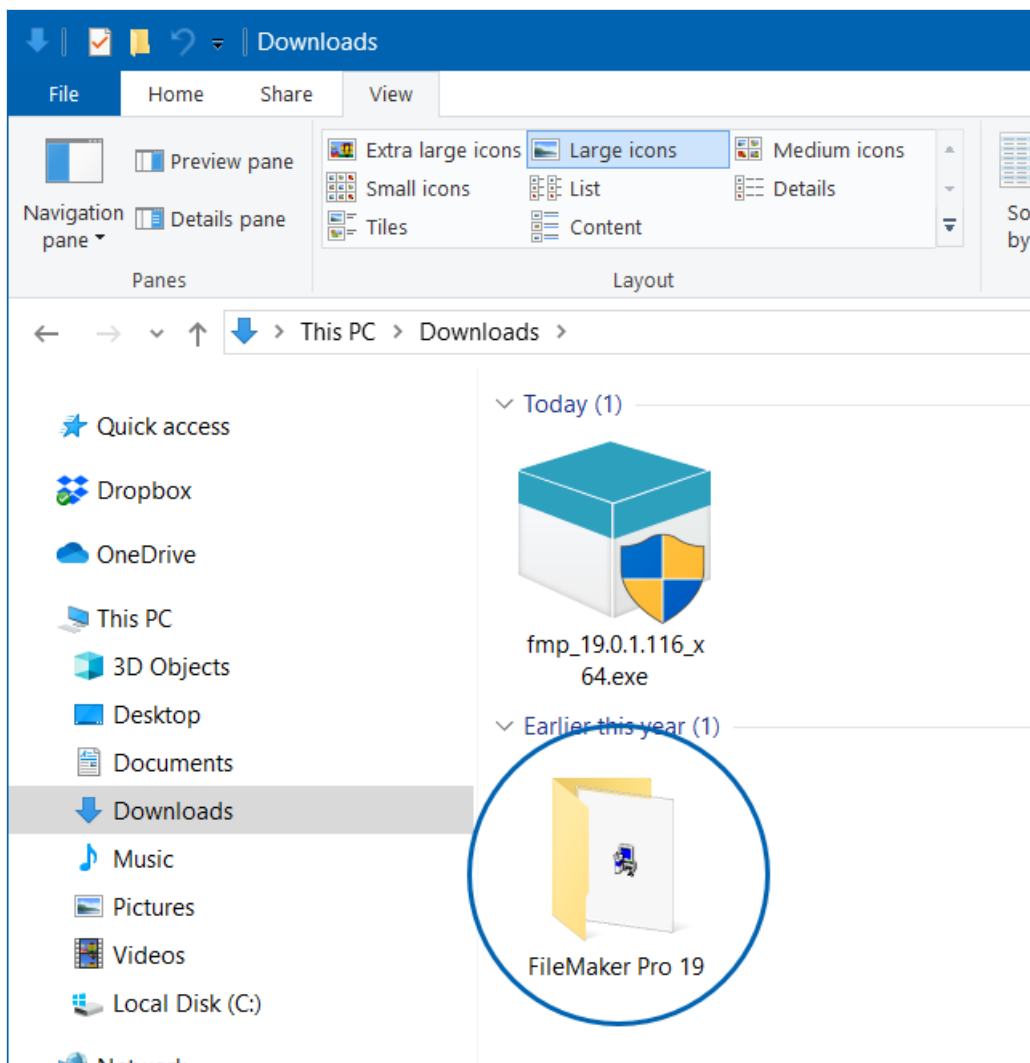
## PC Installation Process

During the installation process, it can be helpful to minimize other applications so each step of the process is clearly visible.

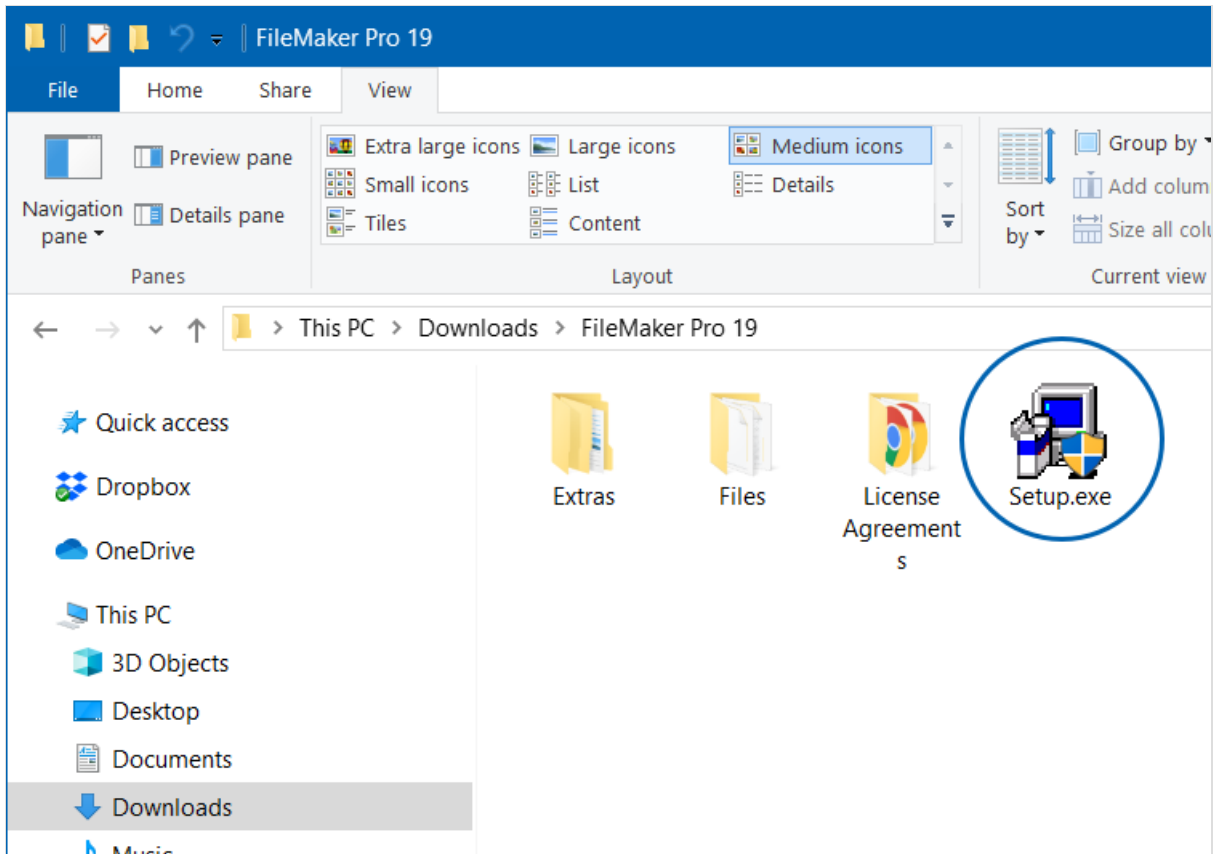
1. Locate and double-click your **FileMaker Installer** (.exe file).



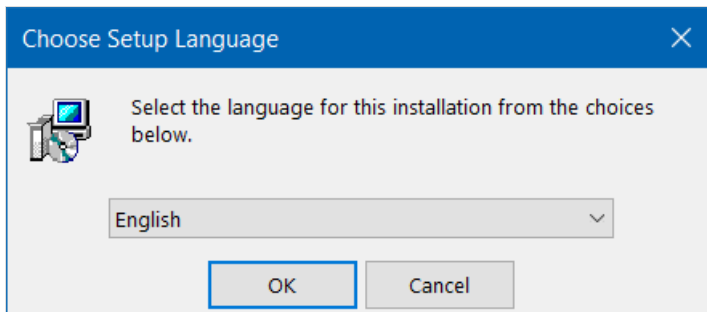
2. If a warning displays about allowing the app to make changes to your device, click **Yes**.
3. After the extraction process runs, double-click the installation folder.



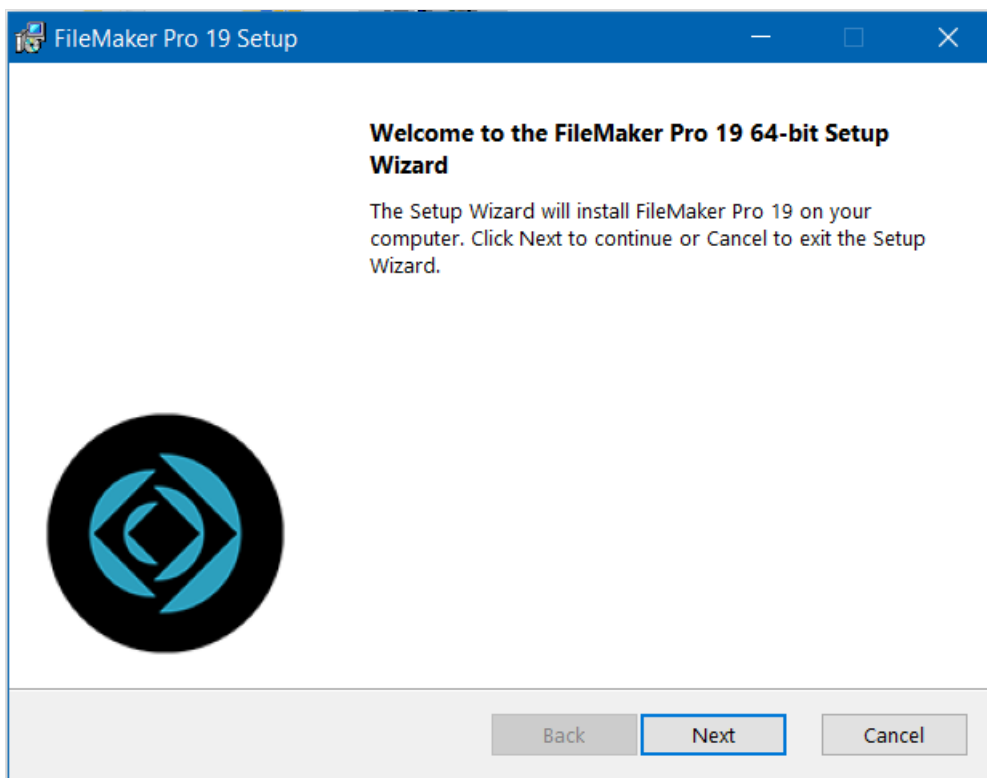
4. Double-click the **Setup.exe** file.



5. If a warning displays about allowing the app to make changes to your device, click **Yes**.
6. For the Setup Language, select English and click **OK**.



7. At the setup dialogs, click **Next**.

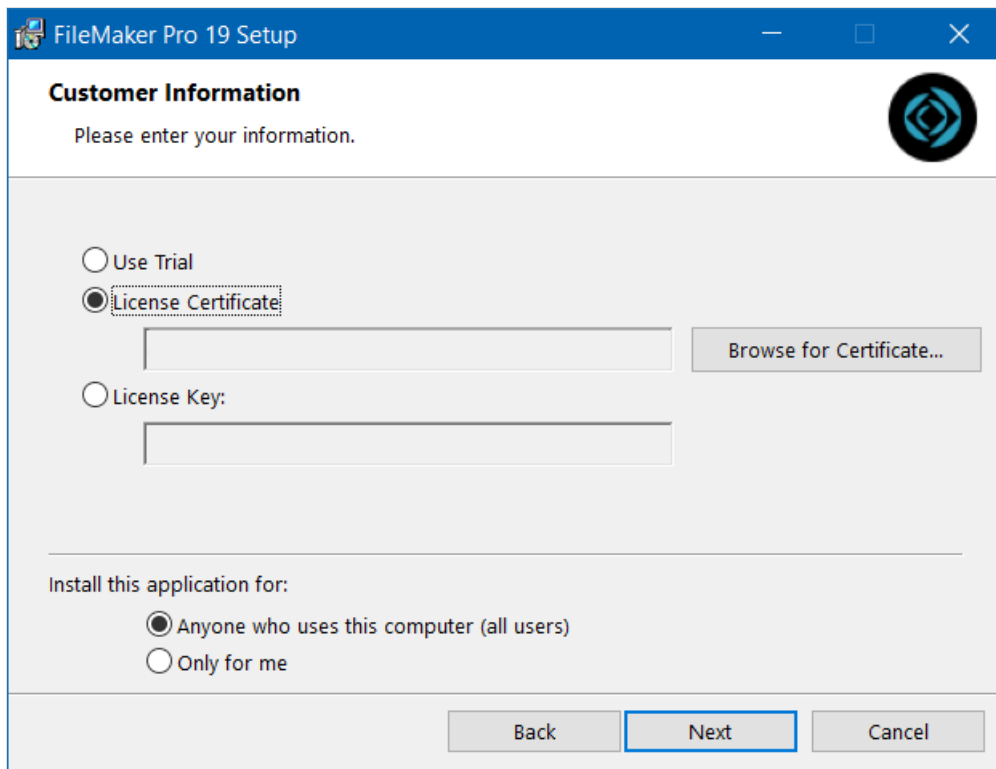


8. At the Customer Information dialog:

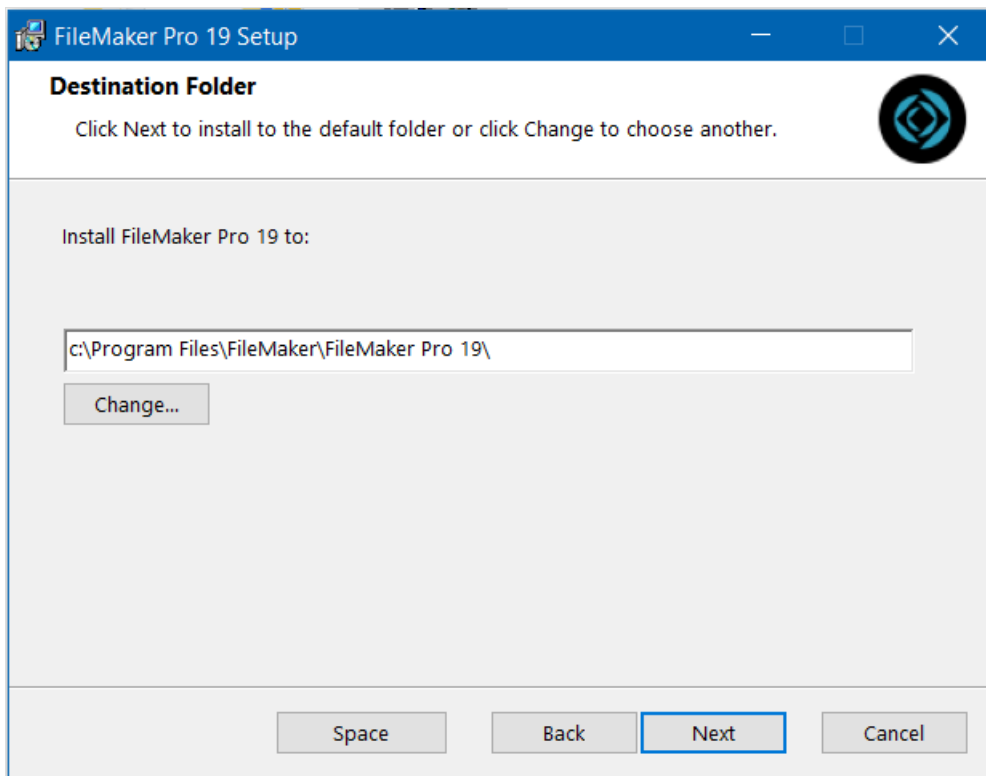
- Verify that the **License Certificate** option is marked and the license key is displayed.

Note: If your license key was *not* placed in the default Downloads folder, you must click Browse for Certificate and manually locate it.

- Verify that the '**Anyone who uses this computer**' option is marked.
- Click **Next**.

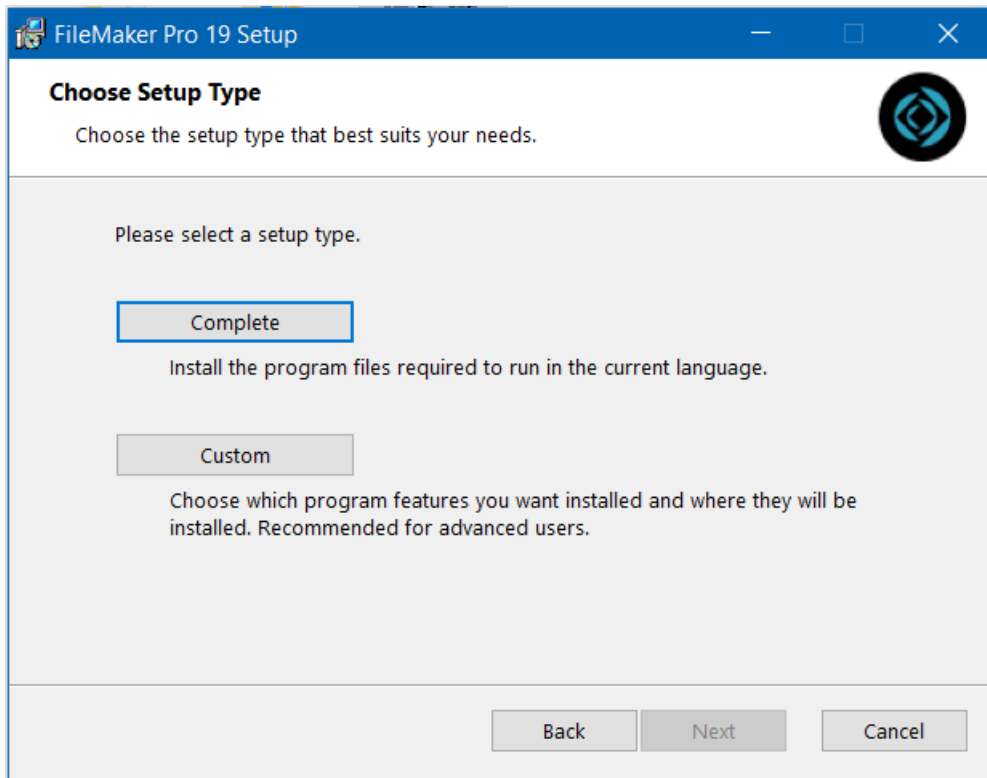


9. Specify the destination folder directed by your system admin, then click **Next**.

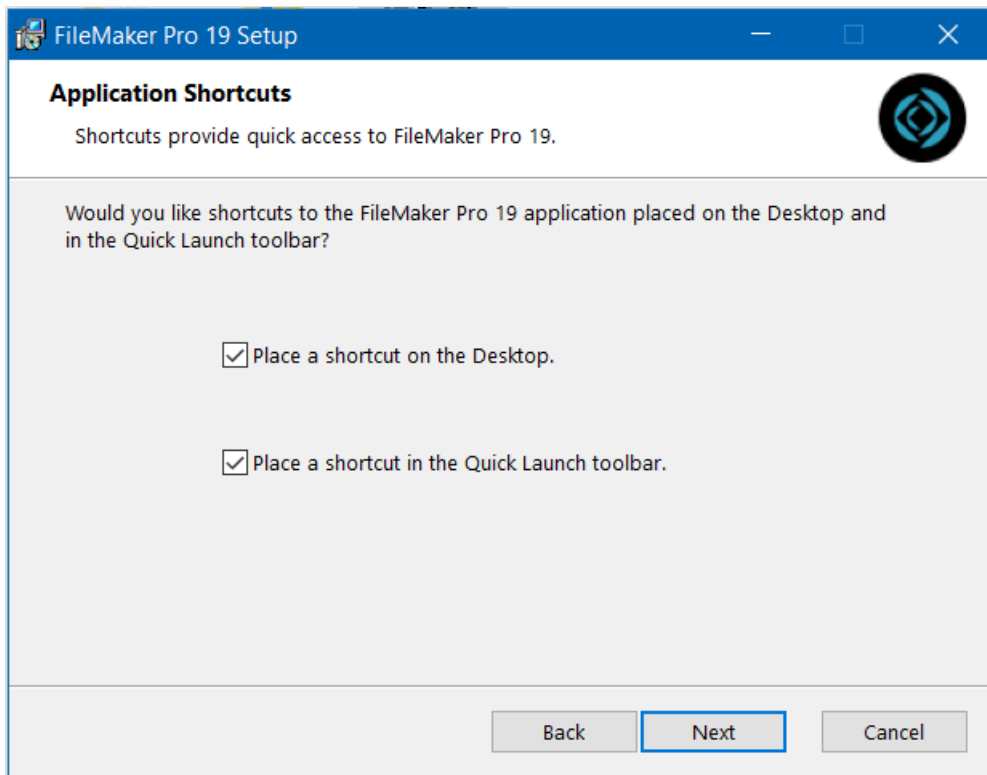


10. Unless your system administrator gives other instructions, click **Complete**.

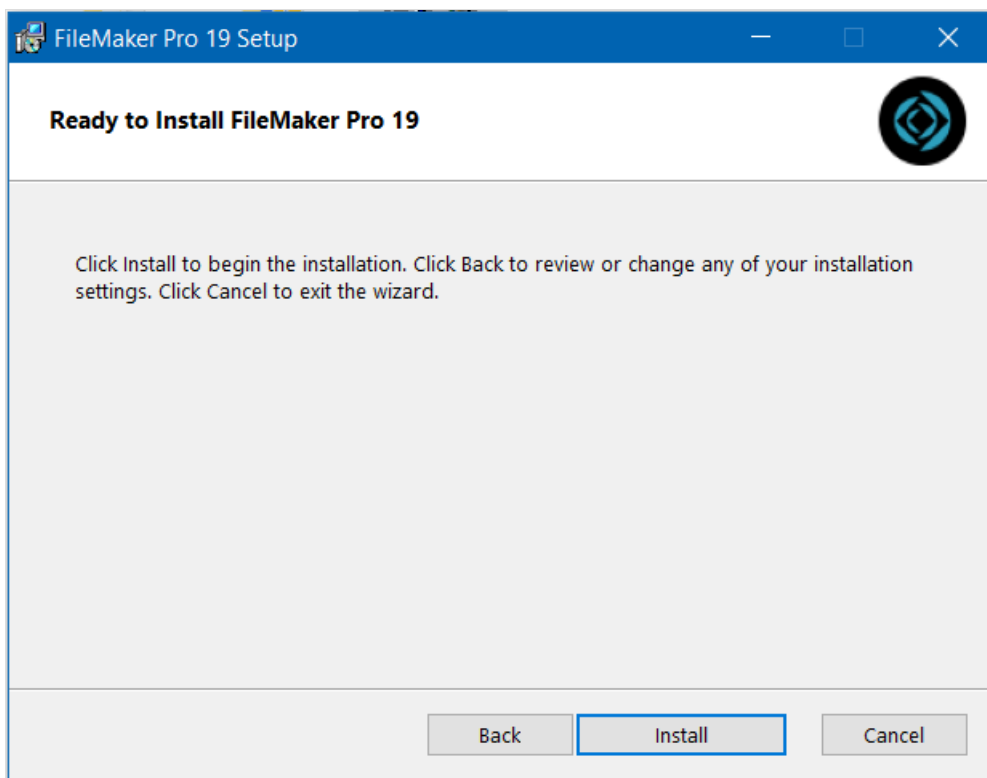




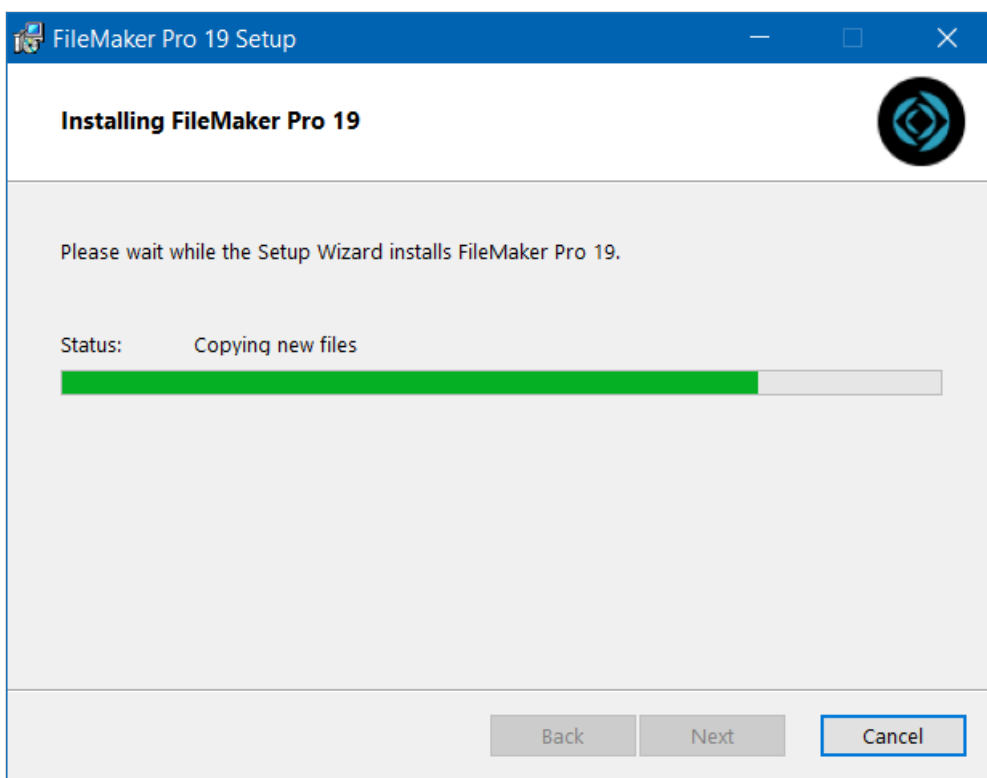
11. Select the application shortcuts you prefer, then click **Next**.



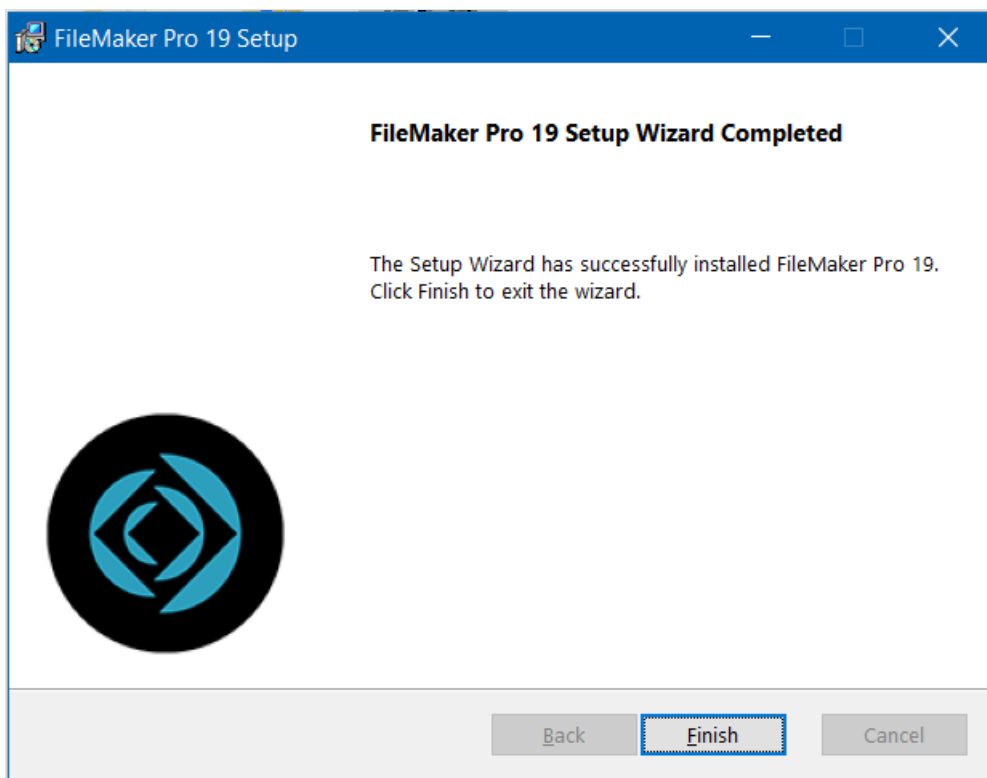
12. Click **Install**.



13. Wait for the installation process to run to completion.



14. Click **Finish**.



You are ready to [login to aACE](#). To streamline access, you can also [obtain a launcher](#).

---