

Installing the FileMaker Client (FM 17)

Last Modified on 07/16/2020 10:36 am EDT

Overview

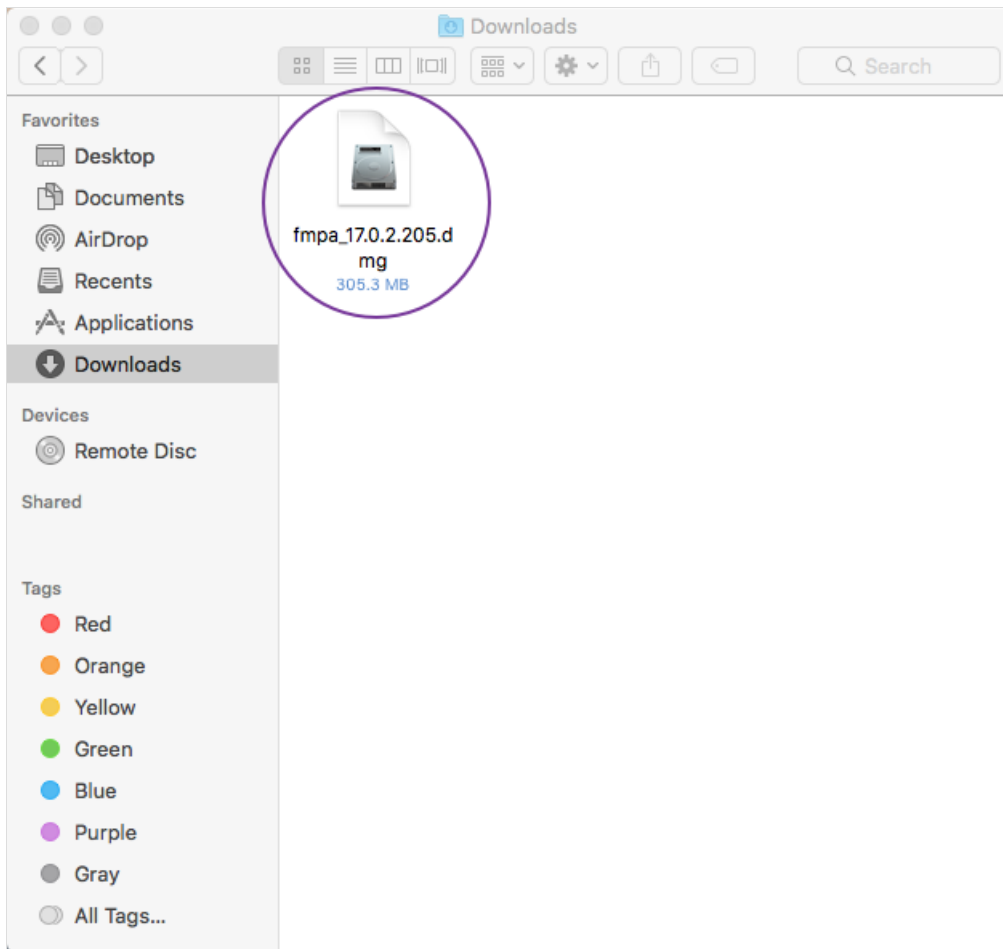
For successfully working with this guide:

- Have at least the minimum [FM 17 certified operating system](#) installed on your computer.
- Have administrator privileges on your computer.
Note: You may need to adjust preferences on your Mac to [install apps that aren't from the Mac App Store](#).
- Obtain these resources from your system administrator:
 - A FileMaker (FM) installer - Take note of the location on your computer where your system admin places the FM installer
 - The exact Organization name for your FM license
 - The License Key for your FM license

Installation Process

aACE is built using [FileMaker Pro Advanced](#). This allows developers to leverage the FileMaker platform to customize aACE as necessary, providing a perfect fit at a lower cost and higher quality than expensive alternatives. To use aACE, you must first install FileMaker:

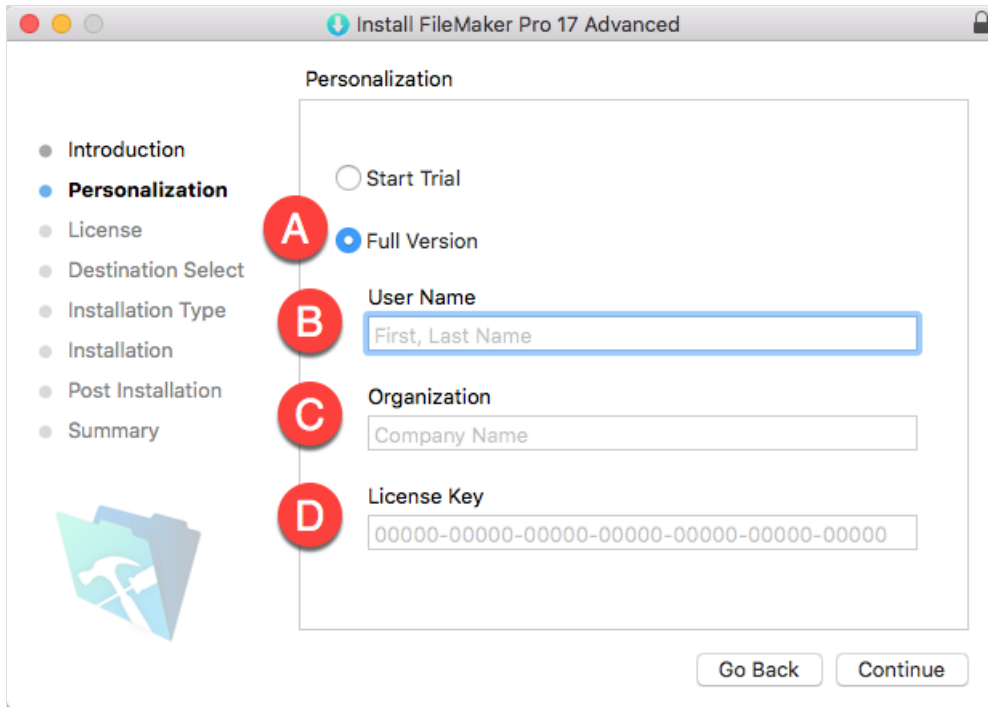
1. Locate your FileMaker Installer and double-click it.



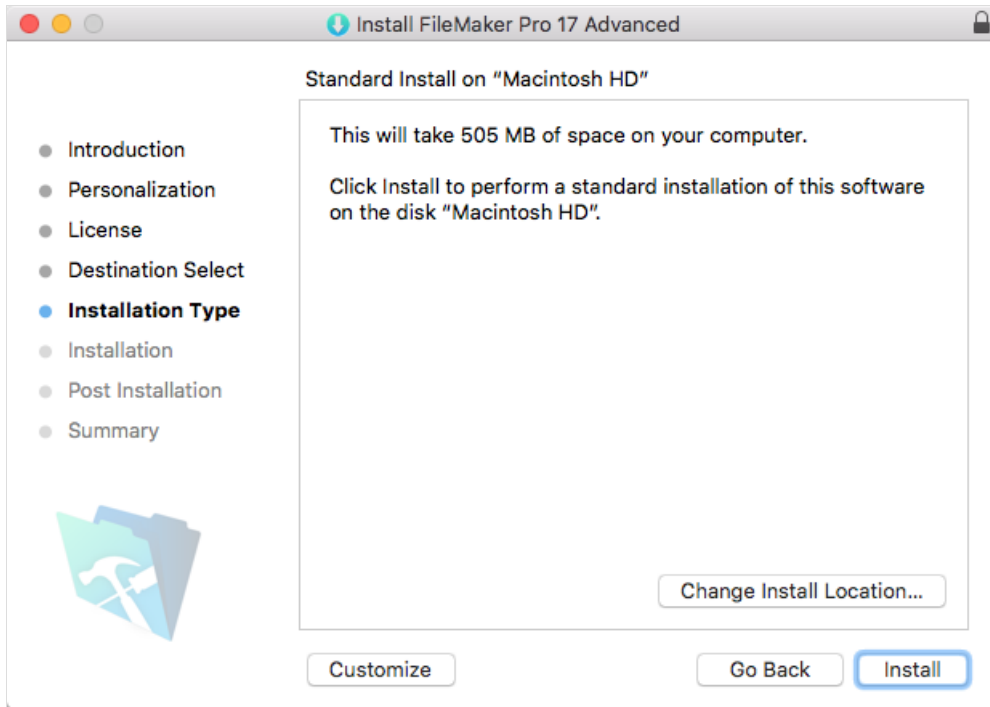
2. Double-click the installation package.



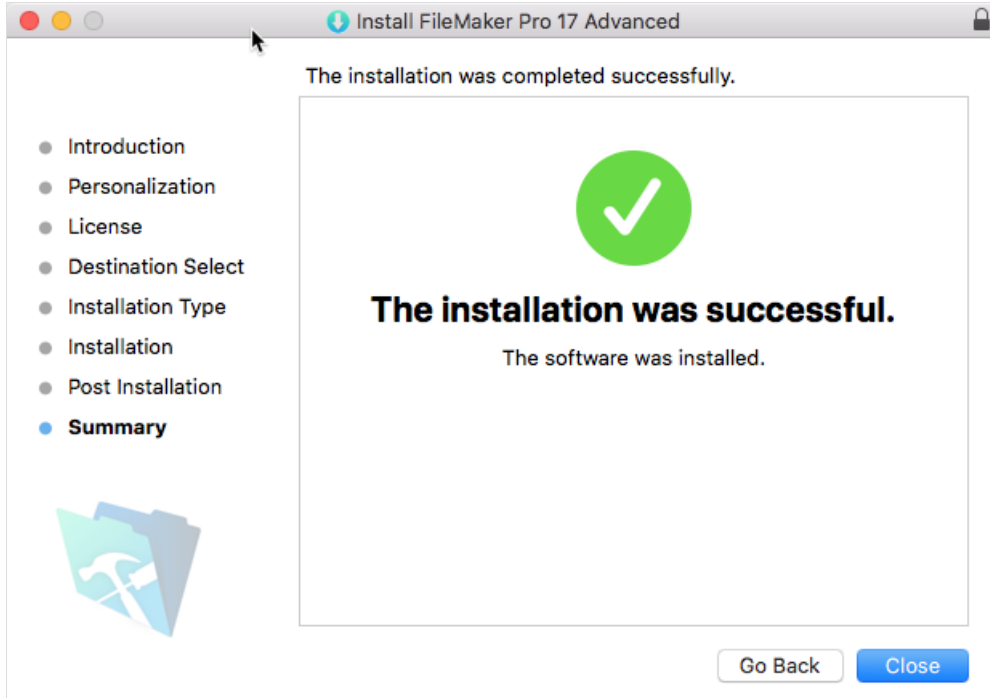
3. At the installation dialog, click **Continue** until you reach the Personalization step.



4. Enter your personalization details, then click **Continue**:
 - A. Mark the flag for Full Version.
 - B. Enter your first and last name for your User Name.
 - C. Enter the exact Organization name for your FM license.
Note: We recommend copying and pasting the Organization name.
 - D. Enter the License Key for your FM license.
5. At the License step, review the FileMaker license agreement, then click **Continue**.
6. At the license confirmation dialog, click **Agree**.
7. At the Installation Type step, click **Install**.
Note: If any changes are needed, your system administrator will help you customize the installation.



8. At the install confirmation dialog, enter the password for your workstation, then click **Install Software**.
9. At the FileMaker registration window, click **Register Later**, then click **OK**.
10. At the installation Summary screen, click **Close**.



After installing FileMaker, you are ready to [access aACE on your computer](#).